

www.somfy.com

Irismo Plus WireFree RTS

EN INSTRUCTIONS

ZH 说明

Ref. 504 1086A

somfy[®]

These instructions apply to all Irismo Plus WireFree motors, in all torque/speed.

CONTENTS

1. Prerequisite information	3	3. Use and maintenance	7
1.1 Fields of application	3	3.1. Open and Close buttons	7
1.2 Liability	3	3.2. STOP function	7
2. Installation	5	3.3. Favourite position (my)	7
2.1. Installation	5	3.4. Additional settings	7
2.2. Battery pack installation and charging	5	3.5. Tips and recommendations for use	8
2.3. Commissioning	6	4. Technical data	8
2.4. Tips and recommendations for installation	6		

1. PREREQUISITE INFORMATION

1.1 FIELDS OF APPLICATION

The Irismo Plus WireFree motor is designed to drive all types of curtain track

1.2 LIABILITY

Any use outside the scope of application specified by SOMFY is non-compliant. SOMFY cannot be held liable for any such use or failure to observe these instructions, which will also result in warranty being voided. Should any doubt arise during installation of the drive or in order to obtain additional information, please visit the www.Somfy.com website or refer to your SOMFY contact.

IMPORTANT SAFETY INSTRUCTIONS FOR INSTALLATION

WARNING: Important safety instructions. Follow all instructions, since incorrect installation can lead to severe injury.

Please give these instructions to the user after installation.

The drive must be installed by an installer who is qualified in motorised systems and domestic automation.

The installer must inform the user of the need to arrange maintenance for the motorised unit and its associated accessories.

He must specify items that require maintenance, replacement or checking.

Ensure that the weight and dimension of the product to be motorised are compatible with the rated torque and rated operating time. These information are available from your Somfy contact.

Use only accessories (Curtain track, brackets, etc.) listed by SOMFY to fit to a unit. Part numbers for accessories are available from your SOMFY contact.

Please refer to the SOMFY literature to ascertain the control point(s) compatible with the actuator selected.

Fixed controls shall be clearly visible after installation.

A suitable multi-pole switching device must be incorporated upstream in the fixed wiring in accordance with the wiring rules.

If the supply cord is damaged, it must be replaced by an identical cord. If the cord is not removable, return the drive to after sales department to avoid a hazard.

To reduce the risk of electric shock, this equipment must have a proper grounding. Some Drives versions are supplied with a grounding type plug, that has a third (grounding) pin. This plug will only fit into a grounding type outlet. If the plug does not fit into the outlet, contact a qualified electrician to install the proper outlet. Do not change the plug in any way.

The actuating member of a biased-off switch is to be located within direct sight of the driven part but away from moving parts. It is to be installed at a minimum height of 1,5 m and not accessible to the public.

IMPORTANT SAFETY INSTRUCTIONS

WARNING: Important safety instructions. It is important for the safety of persons to follow these instructions.

Save these instructions.

-Your installer should inform you of any maintenance required. Do not allow children to play with fixed controls. Keep remote controls away from children.

Watch the motorised installation while it is moving and keep people away until the motorised installation is fully extended.

The drive shall be disconnected from its power source during cleaning, maintenance and when replacing parts.

Frequently examine the installation for imbalance and signs of wear or damage to cables and springs. Do not use if repair or adjustment is necessary.

This appliance can be used by children aged from 8 years and above and persons with reduced physical, sensory or mental capabilities or lack of experience and knowledge if they have been given supervision or instruction concerning use of the appliance in a safe way and understand the hazards involved.

Cleaning and user maintenance shall not be made by children without supervision.

Children shall not play with the appliance.

Before installing the drive, remove any unnecessary cords and disable any equipment not needed for powered operation.

If the drive is fitted with a manual release, install its actuating member at a height less than 1,8 m.

LpA ≤70 dB(A).

IMPORTANT SAFETY INSTRUCTIONS ON BATTERY PACK

ATTENTION!

Improper using battery pack may cause overheat, fire, explosion, resulting in serious injury or death.

- Be certain to follow instructions when charging the battery pack. Battery charging is optimal when exposed to 0 °C to 40 °C.

- Do not disassemble or modify the battery pack.

- Battery Pack should not be exposed to high temperatures (40 °C) or fire.

- Keep the battery pack away from any shock or impact (e.g. falling down from high place)

- Battery should not be exposed to any liquids..

- Should battery pack require replacing, always use Somfy qualified replacement components.

- Please comply with local laws and regulations when discarding used battery pack.

WARNING: For the purposes of recharging the battery, only use the detachable supply unit provided with this appliance.



Safety warning!



Caution!



Information



For the illustration, see page 15.

2. INSTALLATION



Instructions which **must** be followed by the drive and home automation professional installing the Irismo Plus WireFree motor.

Never drop, knock, drill or submerge the drive.

Install a separate control point for each drive.

2.1. INSTALLATION

2.1.1. Installation of the rail (Fig 1)

- 1) Mark the position of the brackets.
- 2) Drill the ceiling or the wall at the right places.
- 3) Attach the brackets.
- 4) Attach the rail on the brackets.

2.1.2. Installation of the motor (Fig 2)

- 1) Unlock the motor
- 2) Insert the motor shaft into the drive pulley hole.
- 3) Lock the motor.

2.2. BATTERY PACK INSTALLATION AND CHARGING

2.2.1. Connection of the battery pack to the motor (Fig 3)

1) Insert battery pack till hear a clicks to lock. If battery pack is not weak, motor will emit one "beep" and LED will green blink for several seconds, then motor is ready to work.

If battery pack is weak, motor will emit one "beep" and LED will red blink for several seconds, charge it refer 2.2.2

2.2.2. Charge of the battery pack (Fig 4)



To ensure electrical safety, this Class III motor must be powered by a «SELV» voltage source (Safety Extra Low Voltage).

Do not use any power charger to charge from the top of battery pack



The battery level must be below 30% before shipping by air.

Use only 5V, <=2A USB charger provided by Somfy to charge the battery pack.

See below table for detail.

The motor can be used while charging

References	Type
9025269	USB charger with EU plug
9025764	USB charger with CN plug
9025765	USB charger with US plug
9025766	USB charger with UK plug

- 1) Connect the micro USB to the bottom of battery pack.
 - 2) After connecting the power charger to the battery pack, the LED on the battery pack will be red. This is the charging mode,
 - 3) When the LED turns green, the charge cycle is complete.
- Disconnect the power charger, and save it for later use.

2.3. COMMISSIONING

2.3.1. Pre-programming the RTS remote control (Fig 5)

- 1) Connect battery pack to the motor, refer to 2.2.1.
- 2) Press the **Open** and **Close** buttons on the RTS remote control at the same time: The motorised product moves briefly, and the RTS remote control is pre-programmed in the motor.

2.3.2. Setting the end limits

At the first command Open or Close, the motorised product make a first run to record the hard stop position. If need to adjust end limits, refer 2.4.2

2.3.3. Checking the direction of rotation (Fig6)

- 1) Press the **Open** button on the RTS remote control:
 - a) If the motorised product opens (a), the direction of rotation is correct.
 - b) If the motorised product closes (b), the direction of rotation is incorrect: Move onto the next step.
 - 2) Press the **my** button on the RTS remote control until the motorised product moves: The direction of rotation has been modified.
 - 3) Press the **Open** button on the RTS remote control to check the direction of rotation.
- If need to change the direction of rotation, refer 3.4.4

2.3.4. Recording the RTS control point (Fig 7)

Press the PROG button on the back of the remote control until the motorised product moves. The remote control address is permanently recorded.

2.3.5. Adjusting the Touch motion sensitivity (Fig 8)



Move the motorised product away from the end limits.

- 1) Press the **Open** and **Close** buttons of the RTS remote control simultaneously until the motorised product moves.
LED is green the motor enter touch motion sensitivity setting mode
- 2) Press the **Open** and **Close** buttons simultaneously until the motorised product moves to switch from high sensitivity, to low sensitivity, to no touch motion, and back to high sensitivity. The LED is on
 - orange LED fast blink for high sensitivity
 - orange LED slow blink for low sensitivity
 - orange LED on for no touch motion
- 3) Press the **my** button until the motorised product moves to confirm the setting.

2.4. TIPS AND RECOMMENDATIONS FOR INSTALLATION

2.4.1. Questions about the Irismo Plus WireFree?

Observations	Possible causes	Solutions
The motorised product does not operate.	The battery pack is weak.	Check whether the battery pack is weak and charge it.
	The remote control battery is weak.	Check whether the battery is weak and replace it if necessary.
	The remote control is not compatible.	Check for compatibility and replace the remote control if necessary.
	The remote control used has not been programmed into the motor.	Use a programmed remote control or program this remote control.

2.4.2. Re-setting the end limits

Readjusting the Open end limit (Fig 9)

- 1) Press the **Open** button to move the motorised product to the end limit to be readjusted.
- 2) Press the **Open** and **Close** buttons of the RTS remote control simultaneously until the motorised product moves. The LED is red.
- 3) Press the **Open** or **Close** button to move the motorised product to the new desired position.
- 4) To confirm the new end limit, press the **my** button until the motorised product moves.

Readjusting the Close end limit (Fig 10)

- 1) Press the **Close** button to move the motorised product to the end limit to be readjusted.
- 2) Press the **Open** and **Close** buttons of the RTS remote control simultaneously until the motorised product moves. The LED is red blink.
- 3) Press the **Open** or **Close** button to move the motorised product to the new desired position.
- 4) To confirm the new end limit, press the **my** button until the motorised product moves.

2.4.3. Erasing the control point from the memory of the motor (Fig 11)

This reset deletes all the local remote control, however the end limit settings and favourite position are retained.

To delete all the programmed remote control, use a pin to press and hold the button at bottom of the motor until the motorised product moves twice.

All the remote controls are deleted.


2.4.4. Erasing the memory of the motor (Fig 12)

This reset deletes all remote control, all the sensors and all the end limit settings, and resets the motor's favourite position (**my**).

To reset the motor, use a pin to press and hold the button at bottom of the motor until the motorised product moves 3 times.

All the settings are erased.

3. USE AND MAINTENANCE

 This drive is maintenance-free

3.1. OPEN AND CLOSE BUTTONS (Fig 13)

Pressing the **Open** or **Close** button fully opens or closes the motorised product.

3.2. STOP FUNCTION (Fig 14)

The motorised product is moving.

Briefly press **my**: the motorised product stops automatically.

3.3. FAVOURITE POSITION (**my**) (Fig 15)

The motorised product is stopped.

Briefly press **my**: the motorised product starts to move, and stops in the favourite position (**my**).

To modify or delete the favourite (**my**) position, see the section entitled "Additional settings"

3.4. ADDITIONAL SETTINGS

3.4.1. Modifying the favourite position (**my**) (Fig 16)

- 1) Place the motorised product in the desired favourite position (**my**).
- 2) Press **my** for ≈ 5 seconds until the motorised product moves: the desired favourite position (**my**) has been programmed.

3.4.2. Deleting the favourite position (my) (Fig 17)

- 1) Press my: the motorised product starts to move, and stops in the favourite position (my).
- 2) Press my again until the motorised product moves: the favourite position (my) is deleted.

3.4.3. Adding/Deleting Somfy control points (Fig 18)

- 1) Find an RTS remote control programmed in the motor.
Press & hold the RTS programmed remote control (A) PROG button or the button on the bottom of the motor until the motorised product moves, the motor is in programming mode.
- 2) Quickly press the RTS remote control (B) PROG button to add or delete, the motorised product moves & the RTS remote control (B) is programmed or deleted from the motor.

3.4.4. Modifying the motor rotation direction (Fig 19)

Move the motorised product away from the end limits.

- 1) Press the **Open** and **Close** buttons of the RTS remote control simultaneously until the motorised product moves.
the LED is green or green blink
- 2) Press the **my** button until the motorised product moves to reverse the rotation direction.

3.4.5. Low Battery Charge (Indicator)

- 1) Motor will emit one audible "beep" (one «beep» before motor start to run and another «beep» after the operation)follow operation of Drapery motor.

Charge battery as per instructions 2.2.2 on previous page (or see Charging the Battery Pack).

- 2) motor will emit one «beep» and LED red fast blink when no battery.

Charge the battery as per instruction 2.2.2

3.5. TIPS AND RECOMMENDATIONS FOR USE

3.5.1. Questions about the Irismo Plus WireFree?

Observations	Possible causes	Solutions
The motorised product does not operate.	The remote control battery is weak.	Check whether the battery is weak and replace it if necessary.
	The battery pack is weak.	Check whether the battery pack is weak and charge it.

If the motorised product still does not work, contact a motorisation and home automation professional.

3.5.2. Replacing a lost or broken Somfy remote control

To replace a lost or broken remote control, contact a Somfy motorisation and home automation professional.

4. TECHNICAL DATA

Battery pack nominal voltage	14,8V
Battery pack continuous working current	2A
Radio frequency	433.42 MHz
Operating temperature	0°C to + 60°C
Index protection rating	IP 30
Safety level	Class III
Battery charging temperature	0°C to + 40°C



Somfy hereby declares that the drive covered by these instructions and used as intended according to these instructions, is in compliance with the essential requirements of Directives 2006/42/EC, and 2014/53/EU.

A declaration of conformity detailing the standards and specifications used and stating all particulars for identification of the drive, name and address of the person(s) authorised to compile the technical file and empowered to draw up the declaration including place and date of issue is available at www.somfy.com/ce.

目录

1. 前提条件信息	9	3. 使用和维护	13
1.1 适用范围	9	3.1. 开启和关闭按钮	13
1.2 责任	9	3.2. 停止功能	13
2. 安装	11	3.3. 中间位置 (my)	13
2.1. 安装	11	3.4. 其他设置	13
2.2. 电池组的安装与充电	11	3.5. 使用提示和建议	14
2.3. 调试	12	4. 技术参数	14
2.4. 安装提示和建议	12		

1. 前提条件信息

1.1 适用范围

Irisimo Plus WireFree电机设计用于驱动所有类型的窗帘轨道。

1.2 责任

使用范围超出SOMFY指定的应用范围是不符合要求的。对于任何此类应用或未能遵守这些说明的应用，SOMFY概不负责，同时还会导致保修失效。安装驱动器期间如有任何疑问，或欲了解更多信息，请访问www.somfy.com网站或与SOMFY联系。

有关安装的重要安全说明

警告：重要的安全说明。遵循所有说明，因为不正确安装可能导致重伤。

请在安装后将这些说明书交给用户。

驱动器必须由具备驱动系统和家庭自动化资格的安装工进行安装。

安装工必须告知用户对驱动装置及其相关配件进行必要的保养。他还必须指出需要保养、更换或检查的元件。

确保受驱动产品的重量和尺寸符合额定扭矩和额定工作时间。Somfy合同中提供了这些信息。

仅使用SOMFY所列的配件（窗帘轨道、支架等）安装装置。配件的零件号可向SOMFY联系人索要。

参考SOMFY文献确定与所选执行器兼容的控制器。

固定控制器在安装后应清晰可见。

必须根据接线规则将适当的多极开关装置集成至固定电线上游。

如果电源线损坏，必须使用相同的电线更换。如果电线不可拆除，将电机返回至售后部门以避免发生危险。



安全警告！



注意！



信息

i 有关图示，参见第15页。

2. 安装



电动系统及家居自动化专业人员在安装Irismo Plus WireFree电机时必须遵守的说明。

切勿使电机掉落或浸入水中，切勿对其进行敲击或钻孔。

为每台电机安装一个单独的控制器。

2.1. 安装

2.1.1. 轨道的安装（图1）

- 1) 标记支架的位置。
- 2) 在天花板或墙壁上正确的位置钻孔。
- 3) 安装支架。
- 4) 将轨道安装在支架上。

2.1.2. 电机的安装（图2）

- 1) 解锁电机
- 2) 将电机轴插入传动皮带轮孔内。
- 3) 锁止电机。

2.2. 电池组的安装与充电

2.2.1. 将电池组连接至电机（图3）

1) 插入电池组，直至听到锁止的咔嚓声。如果电池组电力强劲，电机将发出“蜂鸣音”，LED将呈绿色闪烁几秒，然后电机准备开始工作。

如果电池组电力不足，电机将发出“蜂鸣音”，LED将呈红色闪烁几秒，参考2.2.2为其充电。

2.2.2. 电池组充电（图4）



为了确保电气安全，此III类电机必须由«SELV»电压电源（安全特低电压）进行供电。

不得使用任何充电器从电池组顶部充电



蓄电池电量在空运前必须低于30%。

仅使用Somfy提供的5V，≤2A USB充电器为电池组充电。

详细信息请见下表。

电机可在充电过程中使用

参考	型号
9025269	EU插头的USB充电器
9025764	EU插头的USB充电器
9025765	EU插头的USB充电器
9025766	EU插头的USB充电器

- 1) 将微型USB连接到电池组底部。
 - 2) 将充电器连接至电池组后，电池组的LED将变成红色。这是充电模式。
 - 3) 当LED变绿时，充电循环完成。
- 断开充电器，保存以备后用。

2.3. 调试

2.3.1. 预编程RTS遥控器 (图5)

- 1) 连接电池组至电机，参考2.2.1。
- 2) 同时按下RTS遥控器上的开启和关闭按钮：电机驱动产品短暂移动，RTS遥控器在电机中预编程。

2.3.2. 设置限位

首次收到开启或关闭命令时，受电机驱动的产品执行首次运行，以记录硬停机位置。

如果需要调节末端限位，参考2.4.2

2.3.3. 检查转动方向 (图6)

- 1) 按下RTS遥控器上的开启按钮：
 - a) 如果受电机驱动的产品开启 (a)，则说明转动方向正确。
 - b) 如果受电机驱动的产品关闭 (b)，则说明转动方向不正确：转到下一步骤。
- 2) 按下RTS遥控器上的my按钮，直到受电机驱动的产品移动：转动方向已经改变。
- 3) 按下RTS遥控器上的开启按钮，以检查转动方向。

如果需要调节转动方向，参考3.4.4

2.3.4. 记录RTS控制器 (图7)

按下遥控器背面的PROG按钮，直至受电机驱动的产品移动。遥控器地址将被永久地记录下来。

2.3.5. 调整触摸动作的灵敏度 (图8)



将电机驱动产品从末端限位移开。

- 1) 同时按下RTS遥控器上的开启和关闭按钮，直到受电机驱动的产品移动。
LED显示绿色，电机进入触摸动作灵敏度设置模式
- 2) 同时按下开启和关闭按钮，直至受电机驱动的产品移动，使其从高灵敏度切换至低灵敏度，再至无触摸动作，然后返回高灵敏度。LED亮起。
 - 橙色LED快速闪烁表示高灵敏度
 - 橙色LED缓慢闪烁表示低灵敏度
 - 橙色LED亮起表示无触摸动作
- 3) 按下my按钮，直到受电机驱动的产品移动，以确认设置。

2.4. 安装提示和建议

2.4.1. 有关于Irisimo Plus WireFree的问题吗？

观察结果	可能的原因	解决方案
受电机驱动的产品不工作。	电池组电力不足。	检查电池组是否电力不足，若不足则为其充电。
	遥控器电池电力不足。	检查电池是否电力不足，必要时进行更换。
	遥控器不兼容。	检查兼容性，必要时更换遥控器。
	所用的遥控器尚未编入电机。	使用已编入的遥控器，或编入该遥控器。

2.4.2. 重新设置末端限位

重新调整开启末端限位 (图9)

- 1) 按下开启按钮，移动受电机驱动的产品至将要重新调节的末端限位。
- 2) 同时按下RTS遥控器上的开启和关闭按钮，直到受电机驱动的产品移动。
LED呈红色。
- 3) 按下开启或关闭按钮，将受电机驱动的产品移动至新的预期位置。
- 4) 要确认新的末端限位，请按下my按钮，直到受电机驱动的产品移动。

重新调整关闭末端限位 (图10)

- 1) 按下关闭按钮，将受电机驱动的产品移动至将要重新调节的末端限位。
- 2) 同时按下RTS遥控器上的开启和关闭按钮，直到受电机驱动的产品移动。
LED呈红色闪烁。
- 3) 按下开启或关闭按钮，将受电机驱动的产品移动至新的预期位置。
- 4) 要确认新的末端限位，请按下my按钮，直到受电机驱动的产品移动。

2.4.3. 清除电机存储器内的控制器 (图11)

此复位操作会删除所有本地遥控器，但末端限位设置和中间位置会得以保留。

要删除所有设定的遥控器，使用销按住电机底部的按钮，直至受电机驱动的产品移动两次。
所有遥控器均被删除。

2.4.4. 清除电机的存储器 (图12)

此操作会删除所有遥控器、传感器和末端限位设置，并会重置电机的中间位置 (my)。

要复位电机，使用销按住电机底部的按钮，直到受电机驱动的产品移动三次。
所有设置均被清除。

3. 使用和维护

本电机不需要维护

3.1. 开启和关闭按钮 (图13)

按住开启或关闭按钮，完全开启或关闭受电机驱动的产品。

3.2. 停止功能 (图14)

电机成品正在运动。

点按my：受电机驱动的产品自动停止。

3.3. 中间位置 (my) (图15)

受电机驱动的产品停止。

点按my：受电机驱动的产品开始移动，并在中间位置 (my) 停止。

要修改或删除中间位置 (my)，请参见“其他设置”部分

3.4. 其他设置

3.4.1. 修改中间位置 (my) (图16)

- 1) 将受电机驱动的产品置于想要的中间位置 (my)。
- 2) 按下my大约5秒钟，直到受电机驱动的产品移动：中间位置 (my) 设置完成。

3.4.2. 删除中间位置 (my) (图17)

- 1) 按下my：受电机驱动的产品开始移动，并在中间位置 (my) 停止。
- 2) 再次按下my，直到受电机驱动的产品移动：中间位置 (my) 被删除。

3.4.3. 添加/删除Somfy控制器 (图18)

- 1) 查找编入电机中的RTS遥控器。
按住RTS编程遥控器 (A) PROG按钮或电机底部的按钮，直到电机驱动产品移动，电机处于编程模式。
- 2) 快速按下RTS遥控器 (B) PROG按钮以添加或删除，受电机驱动的产品移动，
RTS遥控器 (B) 编入电机或从电机中删除。

3.4.4. 改变电机转动方向 (图19)

将受电机驱动的产品从末端限位移开。

- 1) 同时按下RTS遥控器上的开启和关闭按钮，直到受电机驱动的产品移动。
LED呈绿色亮起或绿色闪烁
- 2) 按下my按钮，直到受电机驱动的产品移动，以倒转转动方向。

3.4.5. 蓄电池低电量充电 (指示灯)

- 1) 如果蓄电池电量低，则Drapery电机在运行前后各发出一次“蜂鸣音”。
- 按照上一页2.2.2中的说明为蓄电池充电（或参见“电池组充电”）。
- 2) 电机将发出“蜂鸣音”，没有蓄电池时LED呈红色快速闪烁。
按照2.2.2中的说明为蓄电池充电。

3.5. 使用提示和建议

3.5.1. 有关于Irismo Plus WireFree的问题吗？

观察结果	可能的原因	解决方案
受电机驱动的产品不工作。	遥控器电池电力不足。	检查电池是否电力不足，必要时进行更换。
	电池组电力不足。	检查电池组是否电力不足，若不足则为其充电。

如果电机成品仍然不工作，请与专业人员联系。

3.5.2. 更换丢失或损坏的Somfy遥控器

要更换丢失或损坏的遥控器，请与Somfy电动化和家居自动化专业人员联系。

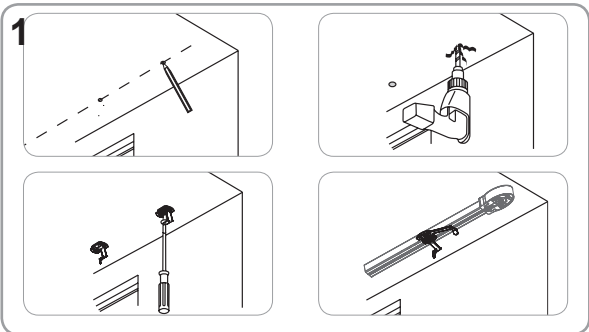
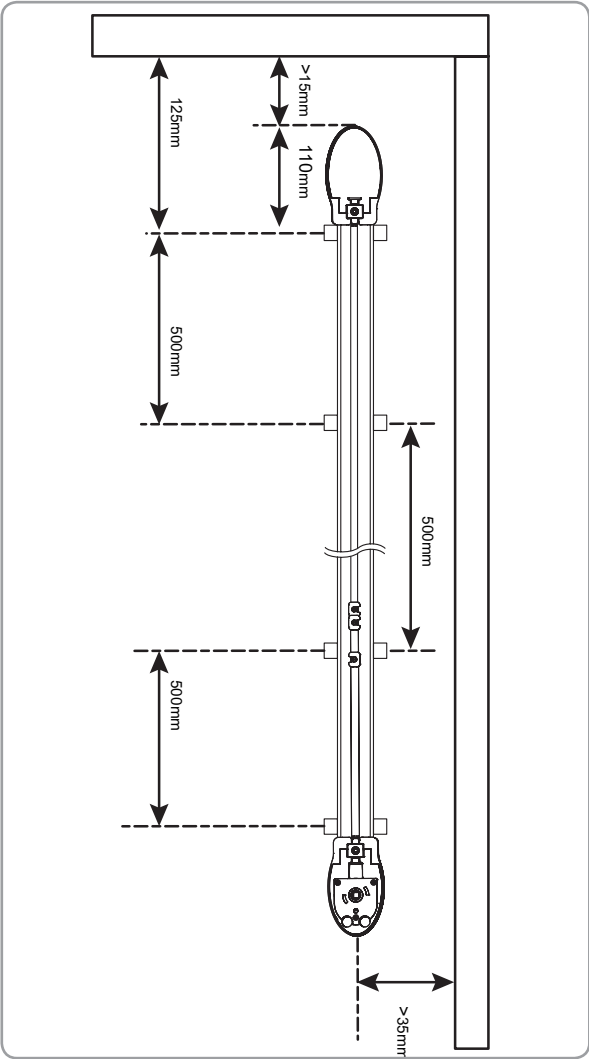
4. 技术参数

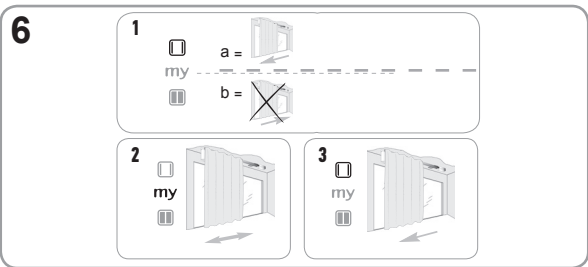
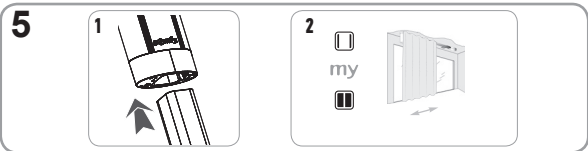
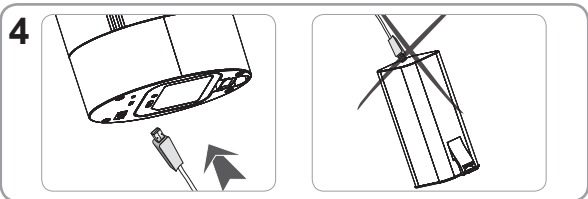
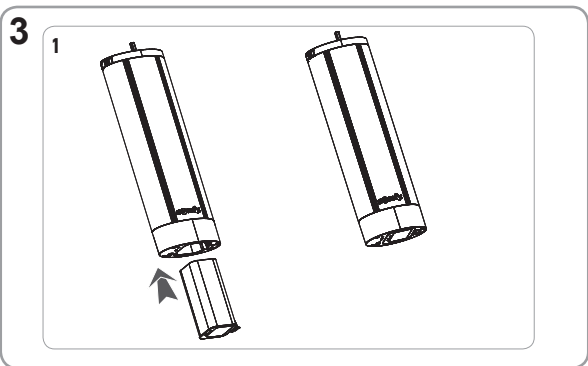
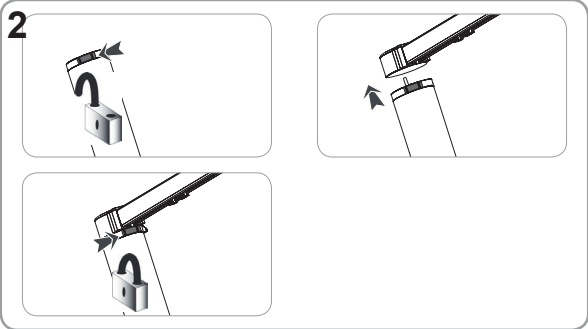
电池组额定电压	14.8 V
电池组连续工作电流	2 A
无线电频率	433.42 MHz
工作温度	0 °C至+ 60 °C
防护等级	IP 30
安全等级	III类
蓄电池充电温度	0 °C至+ 40 °C



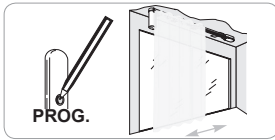
Somfy在此声明：本说明所述的电机及按照本说明使用的电机，均符合指令2006/42/EC和2014/53/EU的基本要求。

登陆网址www.somfy.com/ce可查询符合性声明，其中详细说明所用标准和规范，并说明电机标识的所有详情、获得授权编辑技术文件并拟定声明的人员姓名和地址及发布地点和日期。

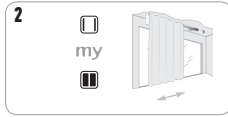
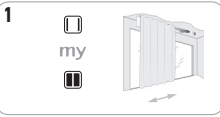




7



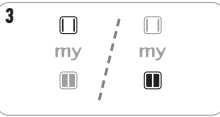
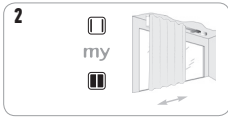
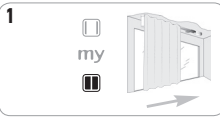
8



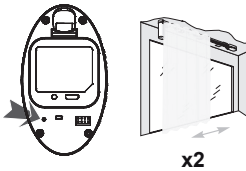
9



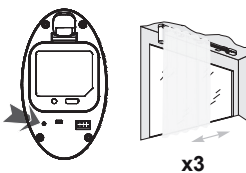
10

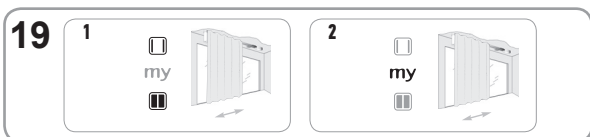
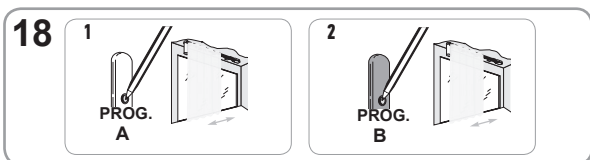
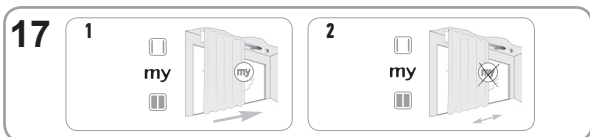
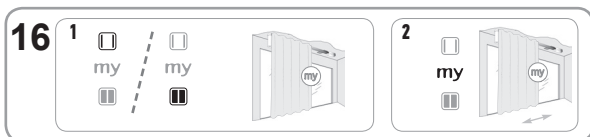
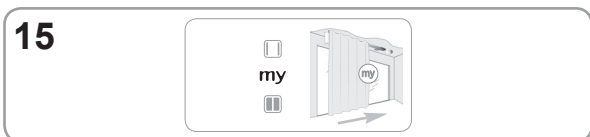
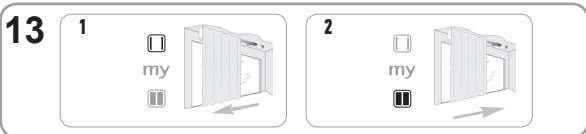


11



12





SOMFY ACTIVITÉS SA

50 avenue du Nouveau Monde
F- 74300 CLUSES

www.somfy.com

somfy®